

# Richard J. Daley Library

801 S. Morgan, Chicago

for UIC Library hours & services,  
visit [library.uic.edu/using](http://library.uic.edu/using)

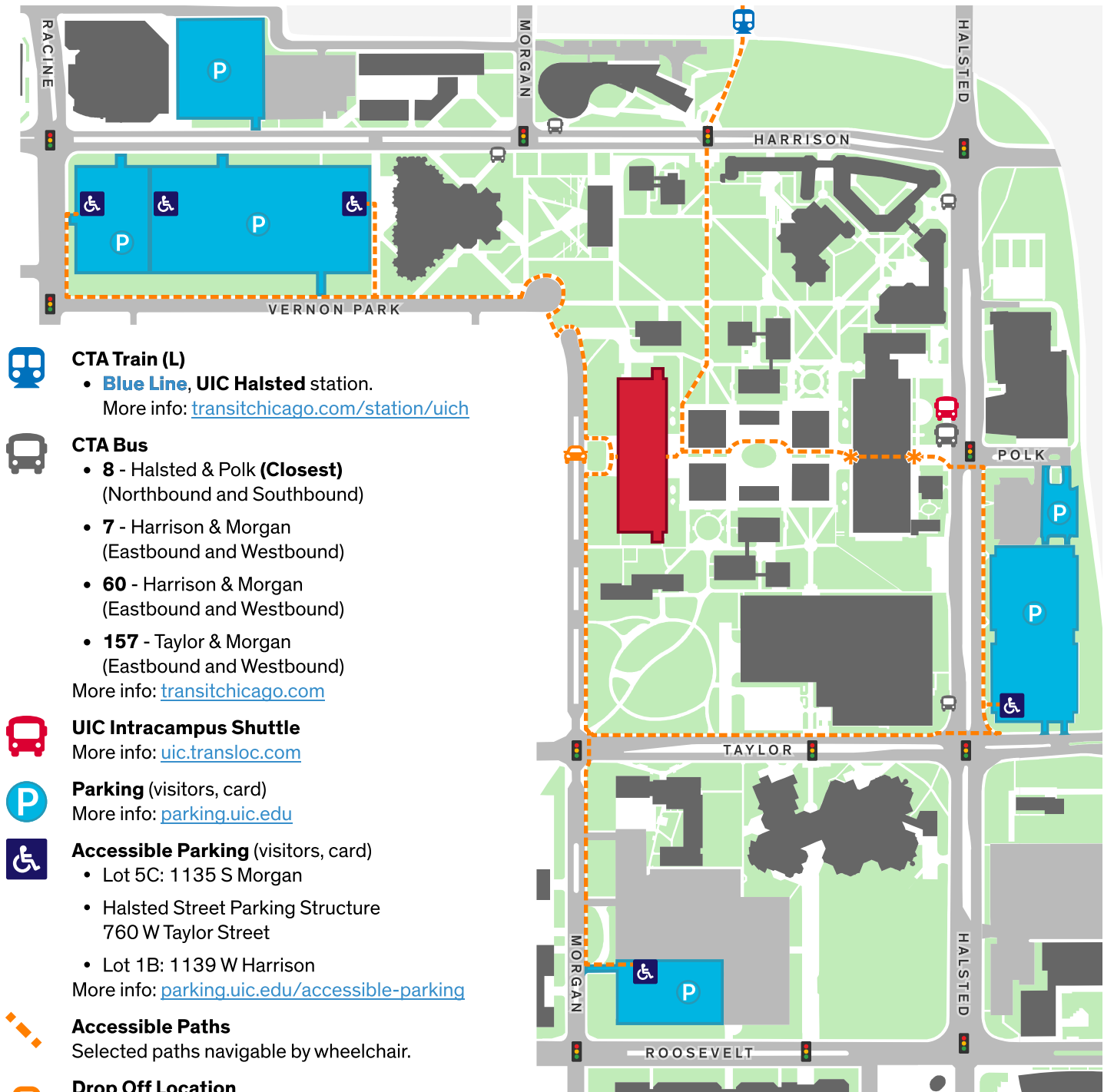


## Getting to the Library

← to **West Campus**

↑  
to **CTA Blue Line**

downtown Chicago ↗



### CTA Train (L)

- **Blue Line**, UIC Halsted station.  
More info: [transitchicago.com/station/uich](http://transitchicago.com/station/uich)



### CTA Bus

- **8** - Halsted & Polk (**Closest**)  
(Northbound and Southbound)
- **7** - Harrison & Morgan  
(Eastbound and Westbound)
- **60** - Harrison & Morgan  
(Eastbound and Westbound)
- **157** - Taylor & Morgan  
(Eastbound and Westbound)

More info: [transitchicago.com](http://transitchicago.com)



### UIC Intracampus Shuttle

More info: [uic.transloc.com](http://uic.transloc.com)



### Parking (visitors, card)

More info: [parking.uic.edu](http://parking.uic.edu)



### Accessible Parking (visitors, card)

- Lot 5C: 1135 S Morgan
- Halsted Street Parking Structure  
760 W Taylor Street
- Lot 1B: 1139 W Harrison

More info: [parking.uic.edu/accessible-parking](http://parking.uic.edu/accessible-parking)



### Accessible Paths

Selected paths navigable by wheelchair.



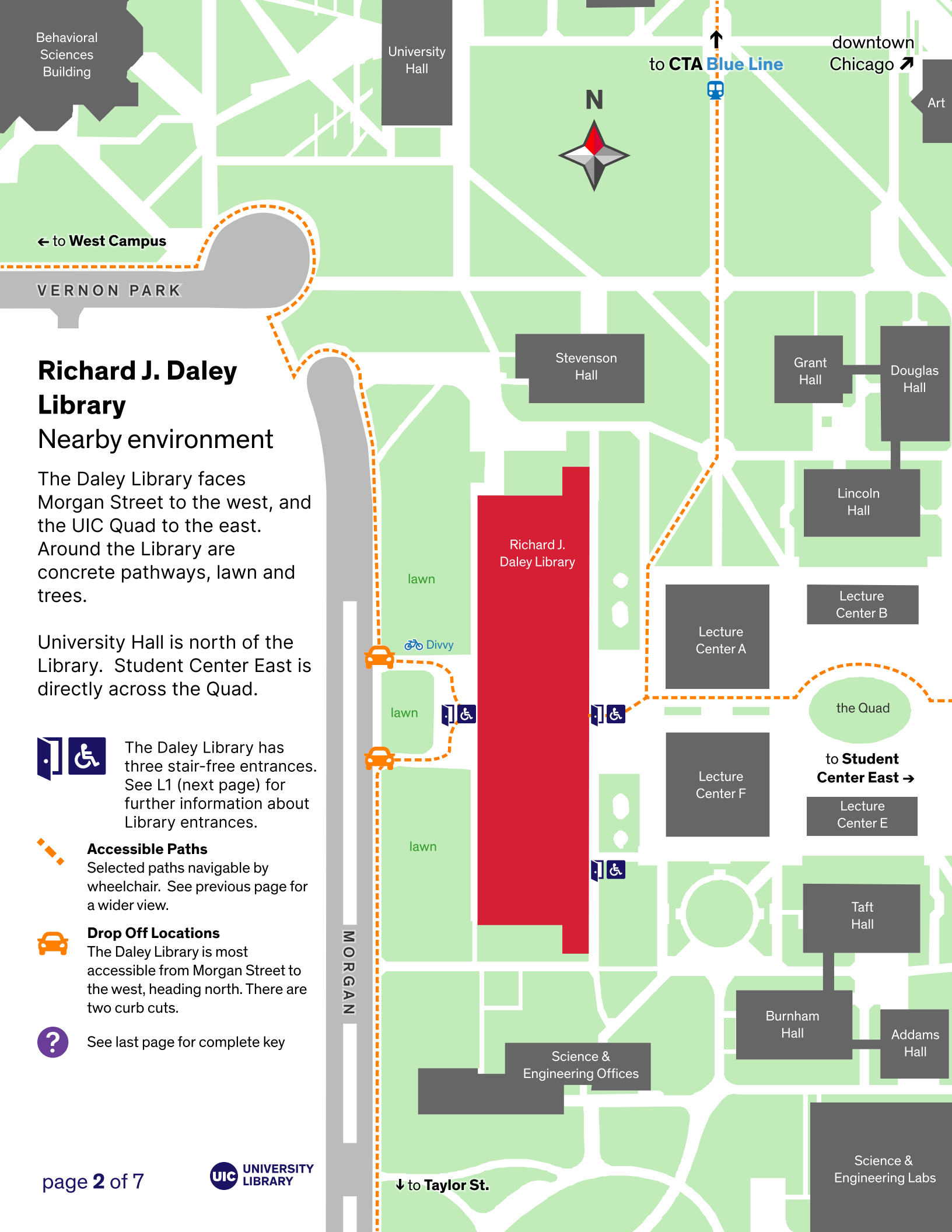
### Drop Off Location

See next page for more info.



See last page for complete key

\* Student Center East has accessible  
entrances at east and west



Behavioral  
Sciences  
Building

University  
Hall

to CTA Blue Line

downtown  
Chicago

Art

← to West Campus

VERNON PARK

# Richard J. Daley Library

## Nearby environment

The Daley Library faces Morgan Street to the west, and the UIC Quad to the east. Around the Library are concrete pathways, lawn and trees.

University Hall is north of the Library. Student Center East is directly across the Quad.



The Daley Library has three stair-free entrances. See L1 (next page) for further information about Library entrances.

### Accessible Paths

Selected paths navigable by wheelchair. See previous page for a wider view.



### Drop Off Locations

The Daley Library is most accessible from Morgan Street to the west, heading north. There are two curb cuts.



See last page for complete key

Richard J.  
Daley Library

lawn

lawn

lawn

Stevenson  
Hall

Grant  
Hall

Douglas  
Hall

Lincoln  
Hall

Lecture  
Center B

Lecture  
Center A

the Quad

to Student  
Center East →

Lecture  
Center E

Lecture  
Center F

Taft  
Hall

Burnham  
Hall

Addams  
Hall

Science &  
Engineering Offices

Science &  
Engineering Labs

↓ to Taylor St.

# Richard J. Daley Library

## Level 1



↑ to University Hall

downtown Chicago →



The Daley Library has three stair-free entrances:

- **East Doors (Main Doors)**  
East side of Library, facing the Quad.  
A card swipe stand with an entry button is to the left of the revolving doors, on a post 3ft. above the ground.
- **IDEA Commons Doors**  
East side of Library, south of Main Doors.  
A card swipe stand with entry button is to the right of the doors.
- **West Doors**  
West side of Library facing Morgan St.  
Between the revolving doors are a pair of single entrance doors. Entry buttons are on nearby brick pillars.



### Emergency Exits



### Information

Get help with the Library, and your research.



### Circulation

Check out and return physical materials.



### Elevators

The largest elevator is furthest north.



### Escalator

An escalator goes between Level 1 & 2 (not to Level 3 or 4).



### Stairs



### Restrooms

The Library has restrooms for women and men on each level. A non-gendered restroom is on Level 2 (next page).



**Lockers** for personal use are available



### Vending Machines



**Quiet or Silent Study** area



**Group Study** area



Computers with **accessibility** features  
Available in the IDEA Commons, Classroom A.  
More info: inquire at Information Desk.



Computer: **Library Catalog**

Dedicated computers for the Library Catalog only.



**Bloomberg Terminal** available in the IDEA Commons.



See last page for complete key



# Richard J. Daley Library

## Level 2



### Emergency Exits



### Elevators

Three public elevators, with the largest furthest north.



### Escalator

An escalator goes between Level 1 & 2; it does not reach Level 3 or 4.



### Stairs

Staircases reach all floors unless otherwise marked.



### Restrooms

The Library has a non-gendered restroom on this level, besides restrooms for women and men.



### Physical Collections

Search Our Collections: [library.uic.edu/search](http://library.uic.edu/search)



### Group Study area

The Library has group study areas on Level 1 & Level 2.



Computers: **Macintosh**



Computers: **Windows**



Computer: **Library Catalog**

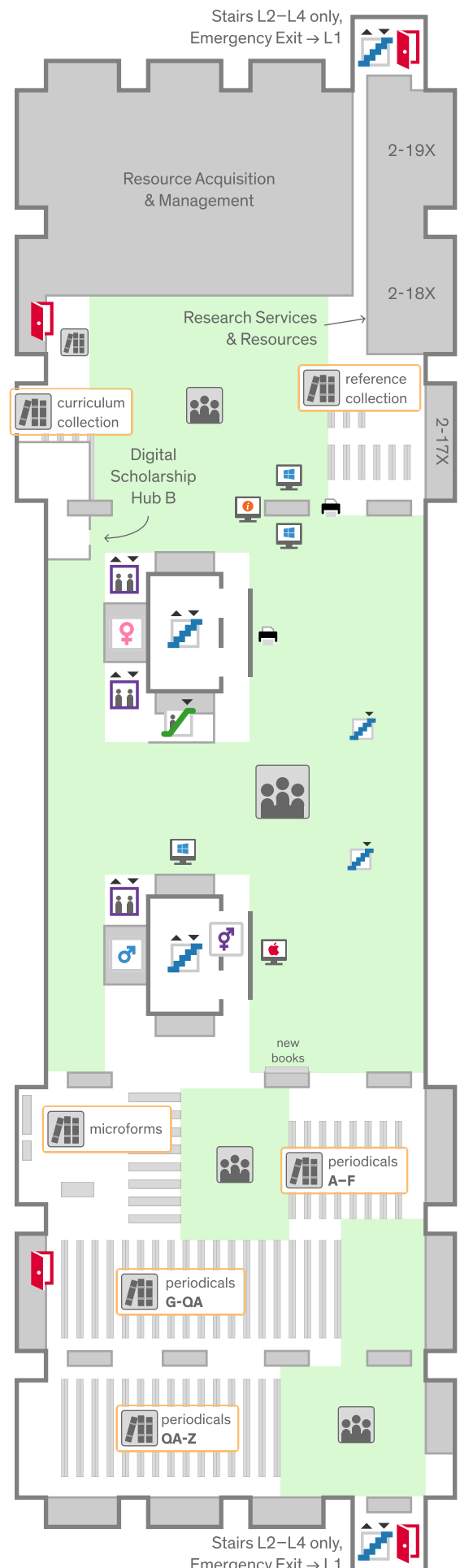
Dedicated computers for the Library Catalog only.



Printer: **Black/White** only



See last page for complete key



# Richard J. Daley Library

## Level 3



### Emergency Exits



### Elevators

Three public elevators, with the largest furthest north.



### Stairs

Staircases reach all floors unless otherwise marked.



### Restrooms

The Library has restrooms for women and men on each level. A non-gendered restroom is on Level 2, see previous page.



### Physical Collections

Search Our Collections: [library.uic.edu/search](http://library.uic.edu/search)



### Quiet or Silent Study area



### Group Study Room

Reservations: [library.uic.edu/study-rooms](http://library.uic.edu/study-rooms)



Computers: **Macintosh**



Computers: **Windows**

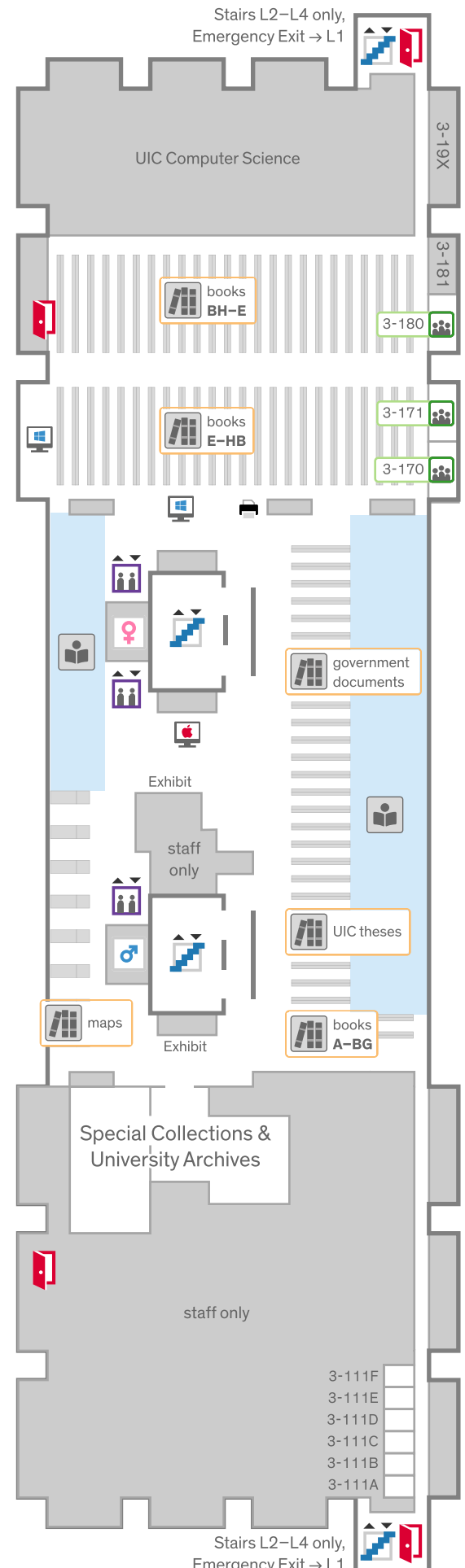


Computer: **Library Catalog**

Dedicated computers for the Library Catalog only.



See last page for complete key



# Richard J. Daley Library

## Level 4



### Emergency Exits



### Elevators

Three public elevators, with the largest furthest north.



### Stairs

Staircases reach all floors unless otherwise marked.



### Restrooms

The Library has restrooms for women and men on each level. A non-gendered restroom is on Level 2; see page 4.



### Physical Collections

Search Our Collections: [library.uic.edu/search](http://library.uic.edu/search)



### Quiet or Silent Study area



### Group Study Room

Reservations: [library.uic.edu/study-rooms](http://library.uic.edu/study-rooms)



Computers: **Macintosh**



Computers: **Windows**



Computer: **Library Catalog**

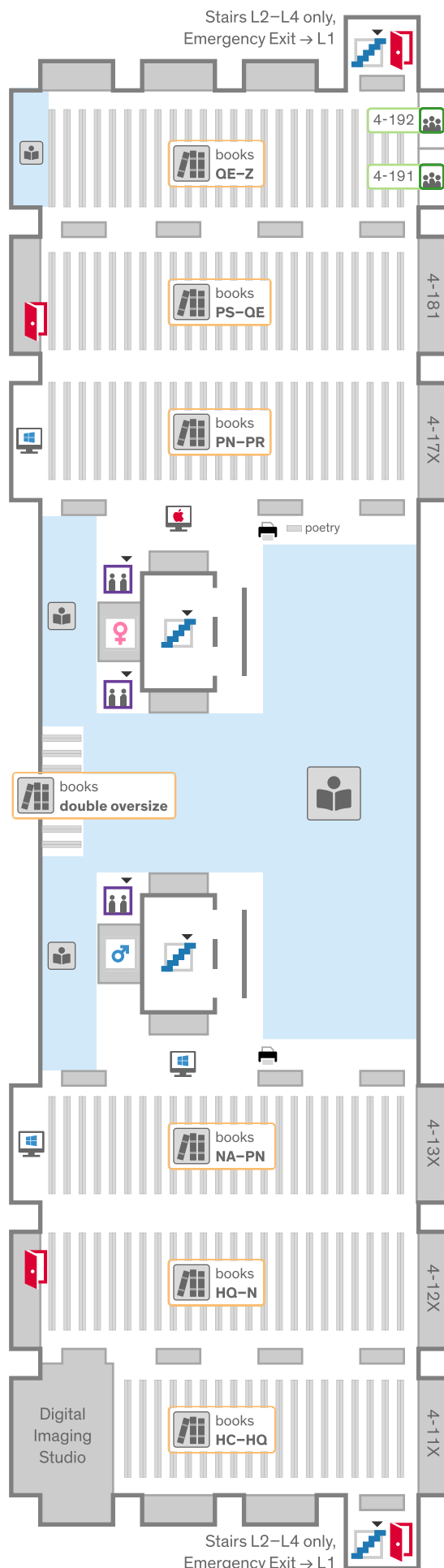
Dedicated computers for the Library Catalog only.



Printer: **Black/White** only



See last page for complete key



# Richard J. Daley Library

## Map Key



### Accessible Entrances

The Daley Library has three stair-free entrances. See page 1–2.



### Emergency Exits

Available on all floors.



### Information

Get help with the Library, and your research. On Level 1, IDEA Commons; see page 3.



### Circulation

Check out and return physical materials at our Circulation Desk. On Level 1; see page 3.



### Elevators

Three public elevators, with the largest furthest north.



### Escalator

Connects Level 1 & 2; not Level 3 or 4.



### Stairs

Staircases reach all floors unless otherwise marked.



### Restrooms

The Library has restrooms for women and men on each level. A non-gendered restroom is on Level 2; see page 4.



### Physical Collections

Search Our Collections: [library.uic.edu/search](https://library.uic.edu/search)



### Lockers

Lockers for personal use in the IDEA Commons, Level 1.



### Vending Machines

Vending machines for food and drink, Level 1.



### Quiet or Silent Study area

The Library has quiet study areas on Level 1, Level 3 & Level 4.



### Group Study area

The Library has group study areas on Level 1 & Level 2.



### Group Study Room

Study rooms are available on Level 1, Level 3 & Level 4. Reservations: [library.uic.edu/study-rooms](https://library.uic.edu/study-rooms)



### Computers: Macintosh

On all levels.



### Computers: Windows

On all levels.



### Computers with accessibility features

Available in the IDEA Commons, Classroom A, on Level 1. More info: visit Information Desk, Level 1; see page 2.



### Computer: Library Catalog

Dedicated computers for the Library Catalog only, available on each level.



### Bloomberg Terminal

In the IDEA Commons, Level 1; see page 3.



### Printer: Black/White only

On all levels.



### Printer: Full Color

Level 1; see page 3.



### CTA Train (L)

- **Blue Line**, UIC Halsted station.

More info: [transitchicago.com/station/uich](https://transitchicago.com/station/uich)

See page 1–2.



### CTA Bus

- **8** - Halsted & Polk (**Closest**) (Northbound and Southbound)
- **7** - Harrison & Morgan (Eastbound and Westbound)
- **60** - Harrison & Morgan (Eastbound and Westbound)
- **157** - Taylor & Morgan (Eastbound and Westbound)

See page 1. More info: [transitchicago.com](https://transitchicago.com)



### UIC Intracampus Shuttle

See page 1. More info: [uic.transloc.com](https://uic.transloc.com)



### Parking (visitors, card)

See page 1. More info: [parking.uic.edu](https://parking.uic.edu)



### Accessible Parking (visitors, card)

- Lot 5C: 1135 S Morgan
- Halsted Street Parking Structure 760 W Taylor Street
- Lot 1B: 1139 W Harrison

See page 1. More info: [parking.uic.edu/accessible-parking](https://parking.uic.edu/accessible-parking)



### Accessible Paths

Selected paths navigable by wheelchair; see page 1-2.



### Drop Off Location

The Library is most accessible from Morgan Street to the west, heading north. There are two curb cuts. See page 1-2.



### Traffic Light